

Centenary and District
 Environment Action
 Incorporated
PO Box 432
 Mount Ommaney Qld 4074

IN THIS ISSUE

Tribute to John Oxley 1
 CDEA Wins Award 2
 Remembering the 2011 Floods 3

NEXT MEETING – THURSDAY 8th FEB

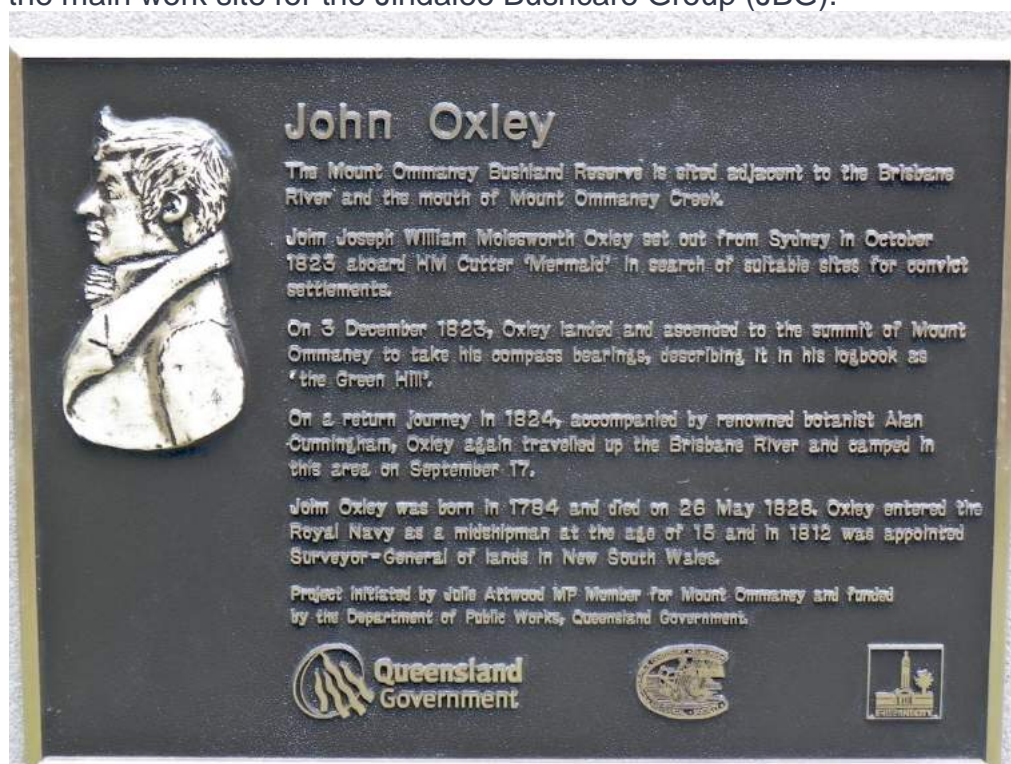
**Professor
 Mike Bennett –
 “Sharks & Rays of
 Brisbane River &
 Moreton Bay”**



What wondrous rays and sharks actually live in Moreton Bay or swim up the Brisbane River? These were the questions asked by Professor Mike Bennett back in 1994, a few years after he had arrived at the University of Queensland from the UK. He found very few answers so, with the aid of university students, he set about finding out for himself. He is now very well informed and will share some of his fascinating knowledge and use some interesting ‘props’ to make his presentation more real.

RECOGNITION OF JOHN OXLEY’S TRIP UP THE BRISBANE RIVER

You may or may not be aware that there is a plaque commemorating Oxley’s landing at the Westlake end of the Mount Ommaney Walk. On the 3rd December 2011, the anniversary of Oxley’s landing at Mount Ommaney, a monument was unveiled at the entrance to the Mount Ommaney Bushland Reserve, Summit Place, to commemorate Oxley’s activities in the area. This area is now known as Wiley’s Scrub and is the main work site for the Jindalee Bushcare Group (JBG).



Plaque commemorating John Oxley’s landing in 1823, Summit Place, Westlake (11:35; 3rd Dec, 2011; Photo © Vaughan Kippers)

People who spoke at the commemoration ceremony included the Member for Mount Ommaney, Julie Attwood, the President of the Centenary Suburbs Historical Society, Caroline Hamilton, and one of a number of descendants of John Oxley. Four generations of Oxley’s descendants were present, including Noela Joyce his great-great-great-granddaughter, her own mother, Noela’s daughter and son and three grandsons.



Julie Attwood, MP, Member for Mount Ommaney, speaking at the commemoration of John Oxley's Landing in 1823, Summit Place, Westlake (11:09; 3rd Dec, 2011; Photo © Vaughan Kippers)

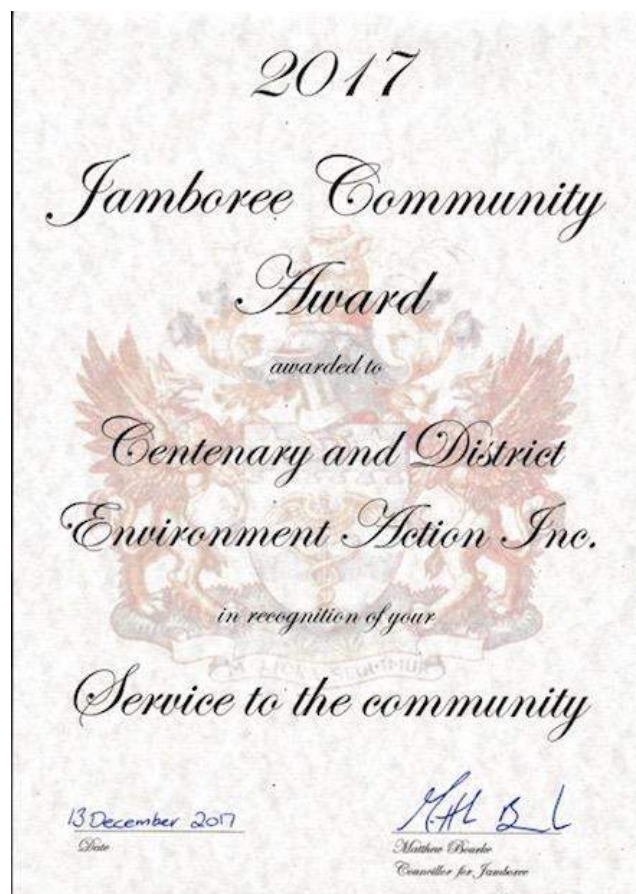


Members of Oxley Scout Group standing behind plaque at the commemoration of John Oxley's Landing in 1823, Summit Place, Westlake (11:28; 3rd Dec, 2011; Photo © Vaughan Kippers)

On 26th May 2012, a seat with plaque nearby was installed in the riverside parkland at Windermere Estate, overlooking the river: this commemorates John Oxley's passage along and naming of Mermaid Reach. The date, nominated by his family, was significant - the anniversary of Oxley's death in 1828. If you would like more information, it is now over 21 years since Ed Parker wrote a brief history of [Early European Exploration of the Brisbane River](#) for Save Our Riverfront Bushland (SORB). The Centenary Suburbs Historical Society has an article specifically on the [Significance of John Oxley on the Centenary Suburbs](#). E.W. Dunlop has written about [John Oxley](#) for the Australian Dictionary of Biography, and there is an informative entry in [Wikipedia](#).

Prepared by Vaughan Kippers

CDEA Wins an Award!



Cr Matthew Bourke (far right) with CDEA Management Committee Members: Di Ruffles, Shealagh Walker, Ray Lane and Ed Parker. (13th Dec, 2017; Photo © Jamboree Ward Office)

2017 finished on a high note for Centenary and District Environment Action when we were presented with an award at the Jamboree Ward Community Christmas party!

Cr Bourke presented CDEA with the **2017 Jamboree Community Award given to a group in recognition of service to the community**. As Cr Bourke said in his presentation speech, CDEA has been operating in the area for over 20 years and saved many hectares of bushland.

It is wonderful to get such recognition! CDEA has been involved with **all the local bushland areas** in one way or another:

- protecting it from development and other impacts such as deer;
- helping with the establishment of several Bushcare Groups;
- working with council and the community on providing facilities such as paths and picnic shelters and, of course, the Pooh Corner Environment Centre;
- introducing the community to the enjoyment provided by local bushland parks;
- increasing public awareness of the value of all parks to native wildlife.

CDEA has also been involved with **local recreational parks and sports grounds** such as Rocks Riverside Park and the football fields in Wacol.

We work for the local environment and the local community.

Please have a look at the flier of *CDEA Hot Issues and Successful Outcomes*, sent out with this newsletter, for more CDEA achievements.

CDEA owes its success to the combination of an excellent Management Committee, strong support of its members and the support of local politicians at all three levels of government. We look forward to the continued support of our local community and its politicians!

Shealagh Walker, President, Centenary and District Environment Action

REMEMBERING THE FLOODS OF 2011 (PART 1)

(prepared by Vaughan Kippers)

Many of us will remember the effects of the Brisbane River flood on the Centenary Suburbs. There was minor flooding during the couple of days before the peak on 12th January, 2011, but nobody was predicting the eventual effects of the floodwaters. Thirty suburbs were named as possibly being affected; this list did not include Westlake. The Lord Mayor Campbell Newman was quoted in the Courier-Mail, as warning residents to prepare for a "worst case scenario" which could affect at least 221 homes and businesses across the city.

Two days before the peak, the water had broken the banks of the Brisbane River in the Centenary Suburbs.



Flooded Picnic Area in Jindalee Boat Ramp Park, with Boat Ramp in Background, Mount Ommaney Drive (18:32; 10th January, 2011; Photo © Vaughan Kippers)



Councillor for Jamboree Ward, Matthew Bourke, recovering wheelie bin from flooded Jindalee Boat Ramp car park, Mount Ommaney Drive (18:37; 10th January, 2011; Photo © Vaughan Kippers)

The waters continued to rise during the next two days, until they peaked in the evening of the Wednesday 12th January.



Flooded Wolston Creek with Prison Reserve beyond (15:41; 12th January, 2011; Photo © Warner Dakin)

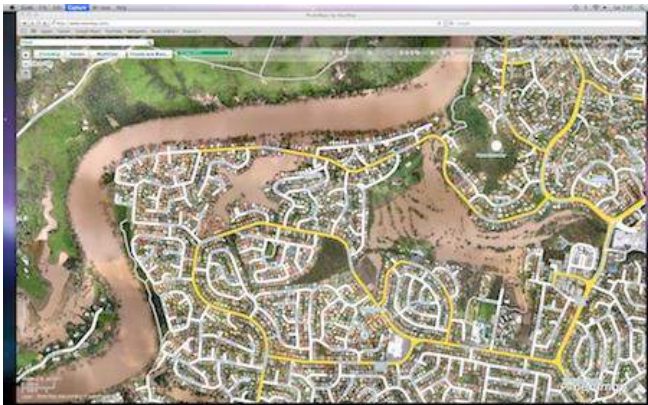


Flooding adjacent to Riverpoint Boulevard, Riverhills (16:02; 12th January, 2011; Photo © Warner Dakin)



Roads connecting the Centenary Suburbs with other suburbs, such as Wacol Station Road, were closed because of floodwaters in creeks feeding into the Brisbane River (17:45; 12th January, 2011; Photo © Warner Dakin)

Aerial views of the flooding do not provide the most realistic picture, because, apparently the [Nearmap](#) aircraft could not get permission to take off from Brisbane Airport at Eagle Farm on the day of maximum of flood heights. The photo below was taken the following day.



Photomap of Westlake on 13th January (Nearmap.com.au)



Tekapo Street, Westlake, the morning after the floodwaters had receded. (07:20; 13th January, 2011; Photo © Vaughan Kippers)



The Brisbane City Council helped clear flood-damaged possessions left on the footpath by residents. (15:38; 14th January, 2011; Photo © Vaughan Kippers)



Soldiers helped clear flood-damaged possessions left on the footpath by residents. (11:05; 16th January, 2011; Photo © Vaughan Kippers)

Flood-affected residents were most grateful for the aid provided by relatives & friends, Brisbane City Council & the “Mud Army” volunteers, and members of the Australian Defence Forces.

**Going 20
years!**

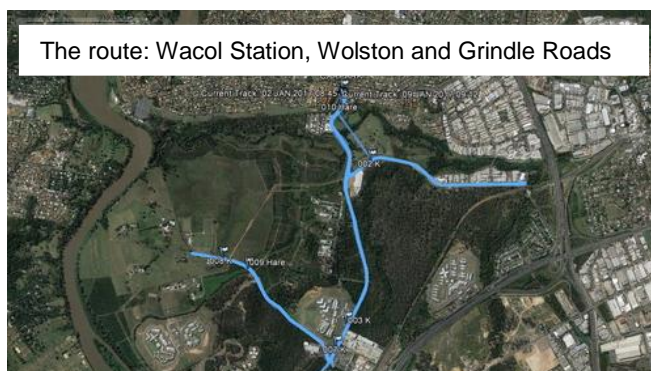


CENTENARY AND DISTRICT ENVIRONMENT ACTION HOT ISSUES

Survey of roadkill in Wacol

As a result of the wanton killing of 17 kangaroos with a vehicle on Grindle Road, Wacol, in February 2016, the RSPCA convened a meeting with Brisbane City Council (BCC), Friends of Pooh Corner, Wolston and Centenary Catchments (WaCC) and CDEA to seek a way to address the issue of kangaroos and wallabies crossing roads in Wacol. As a result, council engaged Professor Darryl Jones of Griffiths University to study the issue and he has made several recommendations to reduce both kangaroo roadkill and injury to people in the Wacol area. Dr Jones' recommendations are being incorporated into the construction of a new bridge over Wolston Creek. They include dry shoulders under the bridge and wildlife fencing on the approaches to the bridge. These measures will guide kangaroos and wallabies under the bridge instead of over the road and should greatly reduce vehicle/kangaroo impacts in this area. Other measures will be used throughout the new 'Wildlife Zone'.

CDEA and WaCC carried out surveys of dead kangaroos and wallabies on Wacol Station, Wolston and Grindle Roads, 3 times a week for 3 months starting early in 2017. The survey is continuing once a month during the 9 months of bridge construction then will run for 3 times a week again for 3 months after construction. The data will be given to Griffiths University and to BCC to use for future Wildlife Zones in other parts of Brisbane.



Oxley Secondary College Site

The college closed over 16 years ago and now the state government is assessing the future of the site. Economic Development Queensland (EDQ) is investigating developing the site and has consulted the community on what should go there. The community was represented by a panel of nine community members of which two came from CDEA's Management Committee. The community survey showed an overwhelmingly desire for green space. EDQ prefers mostly residential development. The site is 19 hectares but is seriously constrained for development by protected vegetation, flooding and landslip leaving only about 2 hectares suitable for buildings. A decision was expected in 2016 but as yet has not happened. UBD 198 F7

Transfer of 200 ha of state-owned land at Wacol still on hold

Another project that has been bubbling along for a long time, since 2006, is the issue of transferring 200 hectares of Corrective Services land in Wacol to Brisbane City Council management or ownership. This was originally promised by the Beattie government but the problem in finalising this has been three government changes since then. The first time the government changed, agreements had been reached, but not completely finalised. Each government change since then has brought new asset reviews and no movement towards the promised public and recreation space. UBD 197 D17

SOME SUCCESSFUL OUTCOMES

Wolston and Centenary Catchments [WaCC] CDEA initiated the establishment of WaCC in 2008, to protect and rehabilitate the local catchments. WaCC is now incorporated and flourishing.

Deer Contributed to the declaration of deer as pest species in Queensland in 2009 and continue to press for their removal.

Freemont St, 17 Mile Rocks Co-respondent in a landmark case in the Planning and Environment Court which resulted in the protection of the Seventeen Mile Rocks Escarpment above Rocks Riverside Park from future development. 2001. UBD 198 E5

Pooh Corner, Wacol Helped negotiate for 134 ha of bushland to be sold to BCC by State Government for a peppercorn price. This land is now a bushland reserve for community recreation and habitat for more than 1300 Kangaroos. 2005. UBD197 F16-M16-H19 B

Centenary Highway in Jindalee Worked with Main Roads in revegetating the area adjacent to the highway with local native plant species after the removal of the exotic pine plantation. UBD 177 Q20

Fort Road, Oxley Instrumental in persuading BCC to purchase the Former Passionist Fathers' land as a bushland reserve - 10.5 ha. 2005. UBD 198 G6

Mt Ommaney 'Hospital Site' - now called Lorikeet Park Campaigned for 5.6 ha of the 'hospital site' to be retained as parkland [opposite Mt Ommaney shopping centre]. Late 1990s. Worked with council on a master plan and on the playground design. Collaborated with Rotary to do some revegetation. UBD 197 K6

Goggs Road Rainforest Remnant Worked with BCC to save this Rainforest Remnant as park. 1999. Helped with new plantings of local natives. UBD 178 A19

Bushcare Groups Assisted in the establishment of several local Bushcare Groups.

Wacol and Riverhills Brisbane City Council's 2 Million Trees Program consulted CDEA about the planting of 400,000 trees in the Wacol area and on Wolston Creek Bushland Reserve.

Wolston Road Extension Consulted by BCC on fauna crossing under Sandy Creek bridge, Kangaroo fencing and revegetation of road corridor with local plant species. UBD 197 F15 to K16

CSR Industrial Development, Bellwood St & Monier Rd, Darra Worked with Sinnamon Park Residents Progress Assoc to contest the loss of native bushland and industrial operations being located so close to residential areas and creeks. Successful in preserving parkland through Planning and Environment Court.

Bushland Reserve at Wolston Creek, Riverhills In 2003 this parcel of 56 hectares of the previous prison farm was transferred from the State Government to the Brisbane City Council for parkland. Concerned Residents Against More Prisons (CRAMP) and CDEA (then CRAC) both contributed to this great outcome.

Bushland Reserve at Horizon Drive, Westlake Led the community in saving 3.14 ha of bushland from development, and having native Brush Box planted as street trees to replace weed trees. 2006 UBD 197 D7

Environmental Centre at Pooh Corner, Wacol CDEA liaised with BCC for the first environmental centre in Brisbane's southwest and it is now completed. CDEA has since received a Lord Mayor's Suburban Initiative Fund grant to fit out and furnish the interior. UBD 197 L16



Pooh Corner billabong



Pooh Corner Environment Centre, Wacol
