

CDEA PUBLIC MEETING:

7.30 pm Thursday 25 Aug
Library Meeting Room
Dandenong Road
Mount Ommaney

Free entry and light supper

PROGRAM:

7.30 pm - speaker
8.15 pm - light supper
8.30 pm - meeting
9.15 pm - close

WHAT'S INSIDE:

Demystifying local groups:

- CDEA
- WaCC
- Habitat Brisbane
- Friends of Pooh Corner
- Save Our Riverfront Bushland
- Sustainable Jamboree

Update - Wacol 200 hectares

Protected species - flying foxes

From the editor's desk

CDEA (2011) MEETINGS:

Nov 24

CDEA MEMBERSHIP:

2011/2012 fees due last July 1

Membership form attached

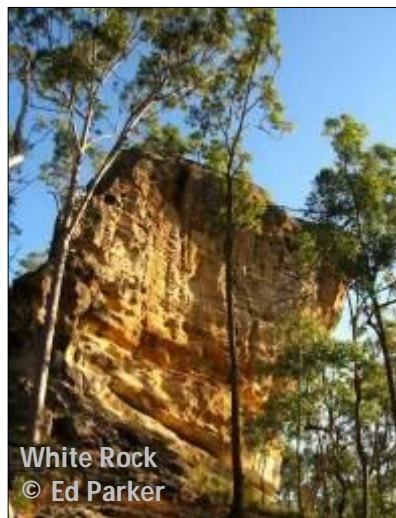
CDEA WEBSITE:

www.cdea.org.au

GUEST SPEAKER:

Ed Parker

Local environmentalist Ed Parker will take us on a virtual tour of some of the bushland delights in south-west Brisbane and the Flinders Peak - Greenbank biodiversity corridor.



TOPIC:

Our Neck of the Woods Bushwalking in the SW Brisbane corridor



It's great to head off into the hinterland or the coast for bushwalking, but have you considered the good but under-rated options much closer to home?

These best kept bushwalking secrets are all less than an hour's drive from the Centenary suburbs, and include short half day walks and full-day walks.

They afford a great opportunity for enjoying and appreciating nature and the scenery on our very doorstep and away from the madding crowds.

This short, light-hearted talk will be accompanied by photos, aerial views and maps to encourage you to get out there and enjoy our slice of nature!

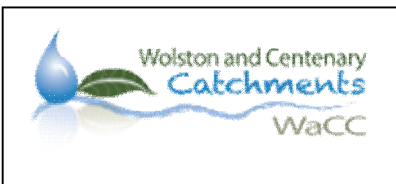
Demystifying Local Groups Of Centenary Suburbs and Surrounds

Compiled by Elizabeth Ryan and Shealagh Walker (continued on page 3)

There is some confusion about the roles of various local community groups that deal with local environmental matters. Read on for a brief description of the groups and refer to their websites for more information. It is rewarding to be a member of these groups and the more members they have, the more they can achieve. For more detailed information, please refer to individual websites or contact the groups directly.



Centenary and District Environment Action Incorporated (CDEA). CDEA is an independent community environmental group which focuses on protection of the natural environment, public parkland and recreational areas. It works on the reduction of the impact of development on the Centenary suburbs and neighbouring districts. CDEA works with all levels of government in addressing local issues. It aims to increase public awareness of environmental matters. CDEA does not undertake direct bushcare restoration. CDEA has been a respected and effective local community voice since 1996. www.cdea.org.au



Wolston and Centenary Catchments (WaCC)

Wolston and Centenary Catchments was formed as the community-based catchment group to oversee and drive the community's involvement in protecting and enhancing the environment in the area covered by the Wolston and Centenary Catchments. These are the catchments of Wolston Creek and the various sub-catchments of the creeks in the Centenary suburbs which feed directly into the Brisbane River. The group is open for membership to individuals, community groups, schools and other educational institutions, industry and other corporate stakeholders who subscribe to the objectives and vision of WaCC. WaCC is supported by Brisbane City Council through the employment of a full time creek ranger and related support for public education and projects. Council manages Brisbane's waterways and natural areas across Brisbane and supports community based environmental initiatives through the Creek Rangers program, the Habitat Brisbane program and an environmental grants program. www.wacc.org.au



©Shealagh Walker
WaCC walk at Wolston Creek Bushland Reserve



©Ed Parker
Grant Witheridge at CDEA meeting

Demystifying Local Groups Of Centenary Suburbs and Surrounds

Compiled by Elizabeth Ryan and Shealagh Walker (*continued from page 2*)



Bushcare Groups, Habitat Brisbane, Brisbane City Council

The Habitat Brisbane program helps community groups restore natural habitats in parks, remnant bushland and wetlands and along waterways, all on BCC land. Habitat Brisbane groups also help to protect, monitor and increase native flora and fauna populations.

The groups' tasks include:

- removing weeds and other rubbish and establishing native plants
- reporting new sightings of wildlife
- reducing illegal dumping through community awareness and education
- improving the attractiveness of natural areas for visitors
- drawing people together to create an increased sense of community



Each bushcare group is run by one or more volunteer co-ordinators under the guidance of a Habitat Brisbane Officer, who also organises equipment and resources. All members of bushcare groups are volunteers and generally work on their sites once a month for a couple of hours. They may also attend quarterly informative regional meetings run by Habitat Brisbane.

Local Habitat Brisbane Bushcare Groups are:

Edenbrooke	Jindalee
Fort Road	Westlake-Riverhills
Horizon Drive	Wolston Creek
Jindalee Creek	

For more information refer to:

CDEA website : www.cdea.org.au
 BCC website : www.brisbane.qld.gov.au
 BCC ward office : 3407 7000



Friends of Pooh Corner (FoPC)

Friends of Pooh Corner was formed in 2005 when two parcels of bushland were put up for sale by the Federal Government: Pooh Corner and the former Sanananda Barracks. Pooh Corner was saved and sold to BCC for a 'peppercorn fee'. Pooh Corner is now a bushland reserve open to the public and maintained by Council. FoPC is an independent group which works with authorities to look after Pooh Corner. www.poohcorner.info



Save Our Riverfront Bushland (SORB)

SORB is an independent Centenary Suburbs residents' group established after concern at the wide scale clearing of large tracts of remnant riverfront bushland in the south-western suburbs of Brisbane. SORB acts for protection of remnant bushland, retention of public access to the riverfront and adequate provision of public open space in the Centenary suburbs. www.sorb.org.au



Sustainable Jamboree (SJ)

Sustainable Jamboree is an independent community group that works to educate, activate and facilitate towards a more sustainable community in partnership with households, schools and businesses. Sustainable Jamboree does not have a formal membership joining system but participants are encouraged to register with the SJ website or their Facebook group. Sustainable Jamboree has around ten active core organisers, many of whom represent other local groups. SJ runs events to educate, support and network organisations and individuals to promote and encourage a more sustainable living, commuting and working environment within the Jamboree Ward. www.sustainablejamboree.org

Update - Wacol 200 hectares

By Warner Dakin (see map on page 5)

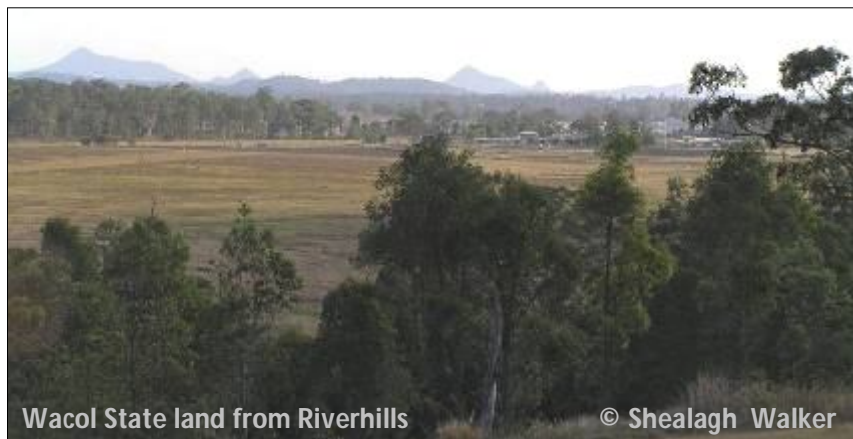
It is now over five years since Peter Beattie promised 200 hectares of prison land would be turned over to the public, and nearly two years since Anna Bligh vehemently reaffirmed that promise in November 2009.

Still we wait, although a resolution of sorts seems to be getting closer. Since we received Anna Bligh's support, Centenary and District Environment Action Inc together with Save Our Riverfront Bushland and Friends of Pooh Corner, have been negotiating with Queensland Corrective Services (QCS) over the tenure of the land and the boundary of a buffer zone, which they have insisted on having between the sex offenders' housing and the public area. In view of the fact that they didn't want to give up any land at all, these negotiations have been protracted and at times heated.

Following the virtual collapse of the negotiations, a meeting was held in Julie Attwood's office on 12 April this year, attended by our negotiating team and representatives of the QCS, Julie Attwood and, attending the meetings for the first time, Annastacia Palaszczuk. Having already agreed to a buffer zone of 500 metres around the sex offenders' housing, which QCS deemed to be adequate, we agreed to a further 200 metres approximately; with this area to be planted under the 2 million trees program and to be unavailable for public use. The western boundary of this area approximately coincided with QCS's original suggested boundary line. We left the meeting convinced that we had made concessions sufficient for the matter to proceed to its conclusion. Whilst QCS could not be described as happy, they were satisfied enough to offer access along the river for a public walk.

Alas, we were unexpectedly disappointed when, at a photo opportunity called by Julie and Annastacia on 27 May (which Annastacia did not attend), it appeared that some misunderstanding had occurred. Julie and Annastacia now required that the boundary of the public exclusion zone be moved approximately 500 metres further west. This land on the west is to be given in trust to the Brisbane City Council, apparently for sporting purposes.

My disappointment with this arrangement stems from the fact that if it is formalised, there will be no unfenced space for the kangaroos and no walking or riding tracks for the public, shaded seating or picnic tables, barbecues or playgrounds, as envisaged by Julie Attwood, who has lobbied for this facility for ten years now.



Wacol State land from Riverhills

© Shealagh Walker

Wolston and Centenary Catchments (WaCC)

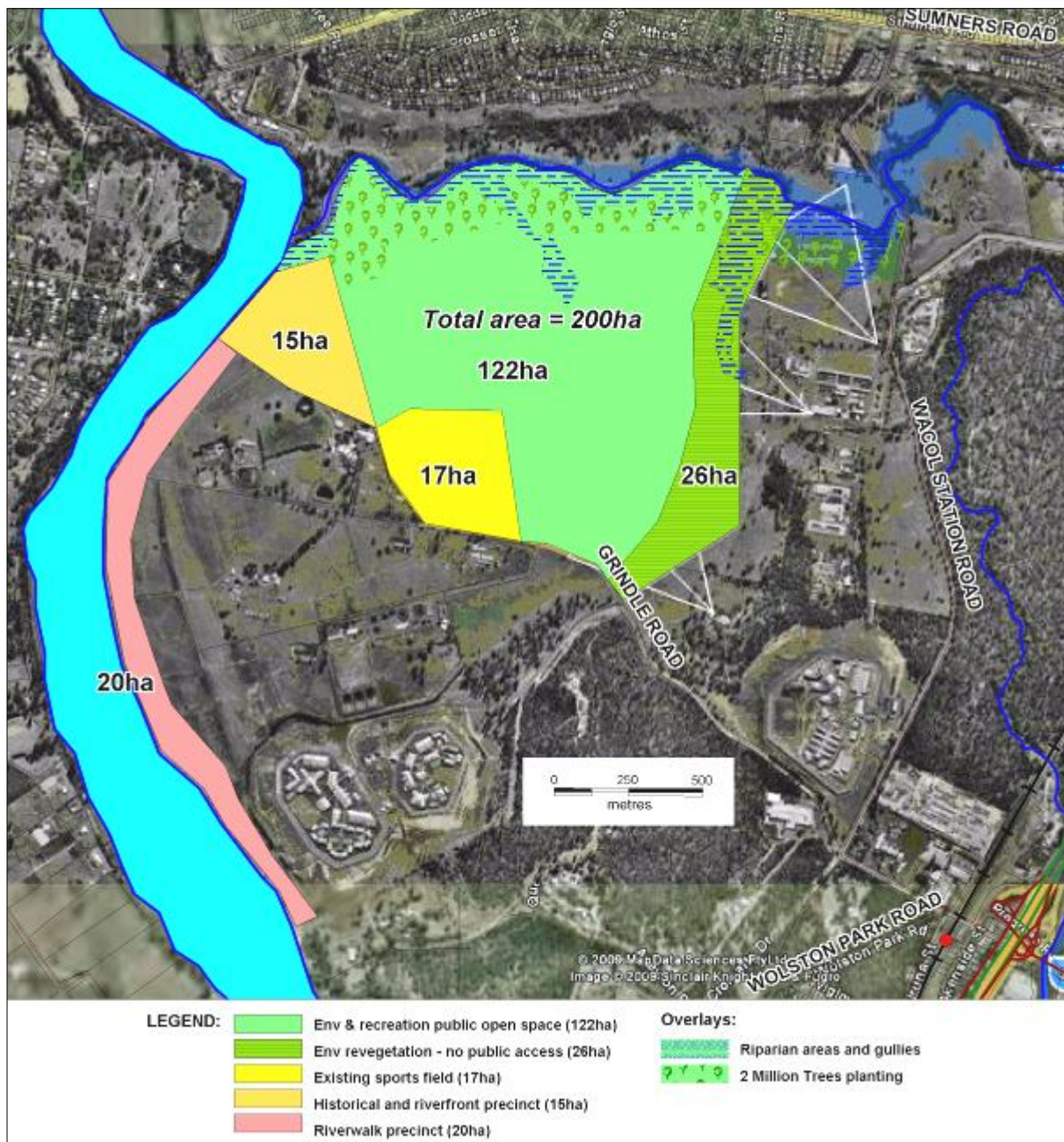
The WaCC group run a number of nature walks throughout the year.
For information contact (acting) Creek Ranger Sean Marler on 0400 711 321
or visit www.wacc.org.au

WaCC membership is open to individuals, community groups, schools and other educational institutions, industry and other corporate stakeholders who subscribe to the objectives and the vision of WaCC.

WaCC meets every 2nd Thursday monthly at Mt Ommaney Library at 7.00pm.

Update - Wacol 200 hectares

By Warner Dakin (from page 4 - map supplied by Ed Parker)



Sustainable Jamboree (SJ)

Sustainable Jamboree runs events to educate, support and network organisations and individuals to promote and encourage a more sustainable living, commuting and working environment within the Jamboree Ward.

Contact 3375 7268 or Ngaire@sustainablejamboree.org.au

SJ meets every 1st Tuesday monthly at Mt Ommaney Library at 7.30pm.

Protected species - Flying Foxes

From the Courier Mail 23/07/2011

Flying foxes are a protected species and it is an offence to kill or injure them, or to interfere with their roosts unless authorised to do so under the Nature Conservation Act 1992.

Queensland has four native flying fox species: the grey-headed, black, little red and spectacled.

They are crucial to keeping forests healthy due to their role as pollinators. In turn these forests provide clean air and water. They also store carbon and provide places for recreation and tourism.

Flying foxes are the natural hosts for the Hendra virus. The virus can be spread from flying foxes to horses through urine or droppings that end up in water or food. Very rarely, the virus can spread from horses to people.

More information at:

www.derm.qld.gov.au

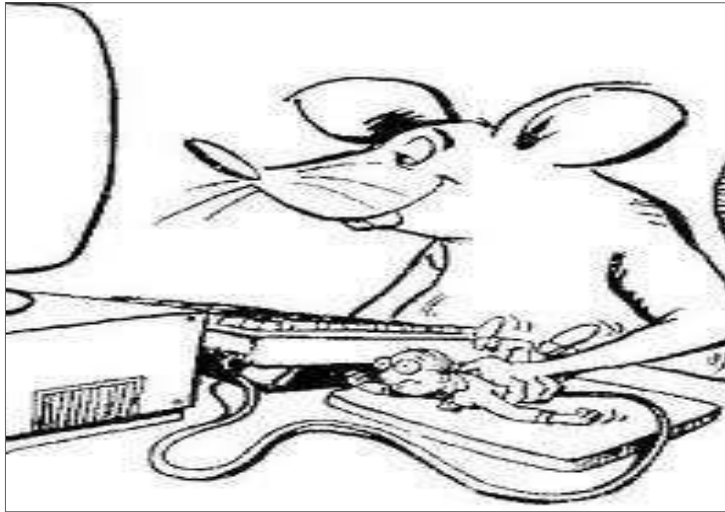
www.dpi.qld.gov.au



Flying Fox roost in Westlake at sunset

Photo/s © Shealagh Walker

From the editor's desk



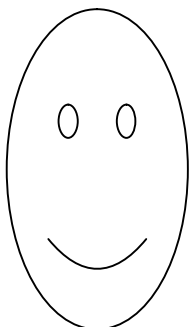
A recently updated CDEA brochure is available at www.cdea.org.au

The 'Current Hot Issues' shows our current projects and activities and the 'Successful Outcomes' indicates our achievements to date.

Such results are only possible through a strong financial membership base, plus the ongoing efforts of a vital and vigorous management committee. It is essential to continually welcome new committee members who are willing to actively participate in the overall workings of CDEA. This will ensure an injection of fresh ideas, perspective and enthusiasm.

CDEA will hold a brief Annual General Meeting on August 25 at 8.30pm after an interesting talk (see front page) and a supper break. All management committee positions will be declared vacant and new nominations will be called for. CDEA members are strongly urged to consider nominating as a committee member. The necessary forms (membership, committee nomination and voting proxy) are at the back of this newsletter. Non-management helpers are also needed, such as people with special skills in areas related to environment, government, law, and more.

If you are interested in discussing any of the committee positions or simply in being a non-committee helper, Warner Dakin is keen to hear from you on:
3376 7724 or at twdakin@bigpond.net.au



This newsletter needs some regular contributors and a few additional scribes from time to time to ensure a greater range of ideas, information and opinions.

CDEA members are welcome to contribute articles, suggestions, ideas for articles and opinions about the content or appearance of the newsletter. The deadline for material in the next (November) edition will be October 27.

Newsletter articles and correspondence should be sent to:
editor@cdea.org.au

Clean up Australia more often than once a year with Wolston and Centenary Catchments (WaCC)

www.cleanupaustaliaday.org.au/join

Join a BCC 'Habitat Brisbane' bushcare group

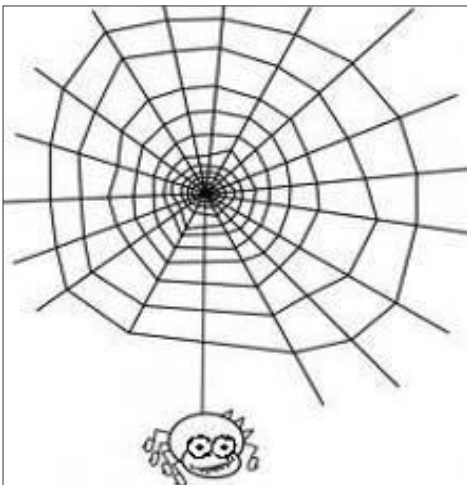
If you can spare just a couple of hours a month, come join an existing Bushcare group. No prior experience necessary, only an interest in the bush and enthusiasm. It's very rewarding to see the native plants come back, and just spending time in the bush and learning about the plants and animals is enjoyable. It's amazing what you will discover and the relationships that can form over time.

Brisbane City Council co-ordinates the program and provides Bushcare participants with:

- On-site technical advice and training in bush regeneration
- Insurance cover, tools, hats and gloves are provided
- Annual program of City Wide meetings, walks, talks and training workshops
- Regular newsletter "The Regenerator" detailing the latest events and news



Contact Brisbane City Council: 3403 8888 www.brisbane.qld.gov.au



CDEA Website - www.cdea.org.au

CDEA's website is packed with information including back issues of the CDEA newsletters and the very informative Fort Road newsletters.

We expect that before long it will be set up in a way which allows all CDEA members including those with minimal computer experience, to contribute articles and photos.

For comments and suggestions about the website, or to contribute some material for publication, contact Brian Korner at webmaster@cdea.org.au

President:
Vice President:
Secretary:
Treasurer:

Shealagh Walker - 3376 1287
Warner Dakin - 3376 7724
Dianne Ruffles
Ray Lane

Committee members:
Newsletter editors:
Web editor:

Elizabeth Ryan, Ed Parker, Jos Hall, Julie Vejle
Julie Vejle, Shealagh Walker, Jos Hall
Brian Korner

Please report the following to Brisbane City Council:

- Illegal activities such as dumping, encroachments, dogs off-leash
- All feral animals such as deer, fox, dogs, cats

Contact Brisbane City Council: 3403 8888 www.brisbane.qld.gov.au

Centenary and District Environment Action Incorporated

COMMITTEE NOMINATION FORM

Annual General Meeting - 25 August 2011

Queries to: twdakin@bigpond.net.au or 3376 7724

Please print and hand this NOMINATION FORM in prior to the AGM or post to:

CDEA-AGM, PO Box 515, Mount Ommaney QLD 4074.

Thank you for your support.

I

being a financial member of
Centenary and District Environment Action Incorporated, nominate:

.....

for the position of (*please circle one below*):

President

Vice-President

Treasurer

Membership Secretary

Minutes Secretary

File Secretary

Newsletter Editor

Committee Member

Signature of Nominator Date/...../.....

Seconded by Date/...../.....

Acceptance of Nominee Date/...../.....

Centenary and District Environment Action Incorporated (CDEA)
is a respected non-profit local community group (since 1996) focusing on:
Protection of the natural environment
Provision of parkland and recreational areas for the community
Mitigation of urban developmental impacts on both natural environment and community.

Centenary and District Environment Action Incorporated

VOTING PROXY FORM
Annual General Meeting on 25 August 2011

Queries to: twdakin@bigpond.net.au or 3376 7724

Please print and hand this VOTING PROXY FORM in at the AGM or post to:

CDEA-AGM, PO Box 515, Mount Ommaney QLD 4074.

Thank you for your support.

I.....

of.....

being a member of Centenary and District Environment Action Incorporated,

hereafter referred to as "the association", hereby appoint

.....

of.....

or failing the member

.....

of.....

as my proxy to vote on my behalf at the Annual General Meeting of the association ,
to be held on Thursday the twenty-fifth day of August 2011, and at any adjournment
thereof.

Signed thisday of August 2011.

This form is to be used {in favour of *} the resolutions.
{against * }

*Strike out whichever is not desired.

Unless otherwise instructed, the proxy may vote as the proxy thinks fit.

Centenary and District Environment Action Incorporated (CDEA)
is a respected non-profit local community group (since 1996) focusing on:
Protection of the natural environment
Provision of parkland and recreational areas for the community
Mitigation of urban developmental impacts on both natural environment and community.

Centenary and District Environment Action Incorporated

MEMBERSHIP SUBSCRIPTION FORM

1st July 2011 - 30th June 2012

Our thanks if you have already paid
Queries to: shealagh1@bigpond.com or 3376 1287

**The greater our membership - the greater our community voice.
Household \$15 ~ Individual \$10 ~ Concession \$5
Circle one membership amount above and list contact details below.**

**Post this form with cheque or money order to:
CDEA Membership, PO Box 515, Mount Ommaney QLD 4074.
Thank you for your membership and support for this and every year.**

Quarterly Notice of Meeting and Newsletter normally distributed by email.

Membership address:

Date.....Postal address

SuburbP/code Home phone

Individual members (over 18):

1. Last Name

First NameMobile Phone.....

Email address

2. Last Name

First NameMobile Phone.....

Email address

3. Last Name

First NameMobile Phone.....

Email address

4. Last Name

First NameMobile Phone.....

Email address

**Centenary and District Environment Action Incorporated (CDEA)
is a respected non-profit local community group (since 1996) focusing on:
Protection of the natural environment
Provision of parkland and recreational areas for the community
Mitigation of urban developmental impacts on both natural environment and community.**